

10ft Cryo Tanks

Quotation Specification: 10ft Offshore Cryo Tanks

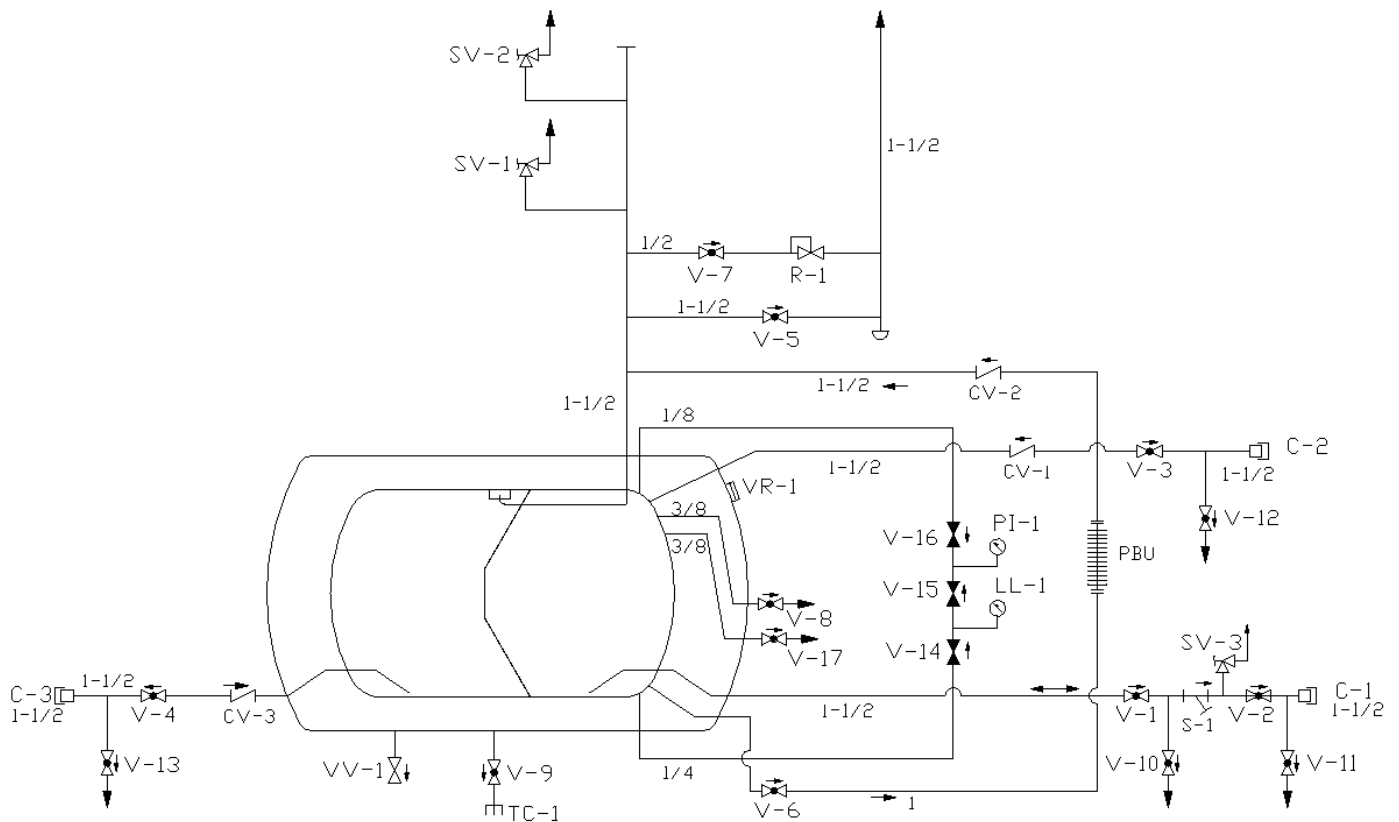
Type:	10ft 6 Bar T75 ISO LIN Tank	Tare:	5,300Kg
Approvals:	DNV 2.7-1, EN12079, IMDG T75	MGW:	11,432Kg
	CSC, ADR/RID, TIR, ASME VIII-1	Payload:	6,132Kg
Inner Shell Material:	304 Stainless Steel	MAWP:	6 Bar
Outer Shell Material:	355 Carbon Steel	Test Pressure:	9.46 Bar
Evaporation Rate:	0.4% per day	Holding Time:	25 Days
External Dimensions:	2991 x 2438 x 2591mm high (10'x8'x8'6" high ISO)		

Category	Specification	Details (if required)
Insulation:	Super insulation with high vacuum	
Piping:	Minimum SCH 10 316 SS	
Corner Castings:	ISO type Corner castings on top & bottom corners(x8)	
Walkway:	Aluminium	
Connections:	NIT 150 S/S with Nylon dust cap	
Vacuum Port:	Saunders Diaphragm Valve (1 1/2")	
Vacuum Measurement:	Hastings DV-6R Vacuum Gauge	
Vessel Design Code:	ASME VIII Div.1	
Pressure Raising:	Stainless Steel finned tubing 316L	
Valve Type:	Herose & Rego valves	
Rear Fill:	Direct rear fill to allow for concurrent fill/liquid decant	
Test Requirements:	As per DNV 2.7-1, EN12079, ISO 1496-3:1995 Pressure test (Hydro or Gas) @ 1.3 x MAWP (+ 1 Bar for Vacuum insulated) Leak test & Service equipment test (Gas) @ 0.9 Bar x MAWP	
External Finish:	Shot blasted to Swedish standard SA 2 ½. International Paint System Prime with 1 coat of zinc rich epoxy (Interzinc 52) to a nominal d.f.t. of 50 microns. Intermediate coat of micaceous iron oxide (Intercure 200) to a nominal d.f.t. of 100 microns. Finish with 1 topcoat of epoxy acrylic isocyanate free (Interfine 691) to a nominal d.f.t. of 50 microns. Overall nominal d.f.t. 200 microns Colour: White 9010 (Frame) Colour: White 9010 (Cradles/Vessel)	
Customer Logos:	As per customers requirements	

Product: Photographs



Product: Schematic



6 bar Schematic

V-1	ISOLATION VALVE	CV-1	RECIRCULATION LINE CHECK VALVE
V-2	ISOLATION VALVE	CV-2	PBU RETURN LINE CHECK VALVE
V-3	RECIRCULATION VALVE	CV-3	REAR FILL LINE CHECK VALVE
V-4	REAR FILL VALVE	S-1	LINE STRAINER
V-5	MANUAL VENT VALVE	SV-1	PRIMARY RELIEF VALVE, SET AT 6 BAR
V-6	PBU FEED VALVE	SV-2	SECONDARY RELIEF VALVE, SET AT 6 BAR
V-7	ROAD RELIEF VALVE	SV-3	LINE RELIEF VALVE
V-8	95% TRYCOCK VALVE	LL-1	LIQUID LEVEL GAUGE
V-9	TC ISOLATION VALVE	PI-1	PRESSURE GAUGE
V-10	LINE BLEED VALVE	TC-1	VACUUM THERMOCOUPLE GAUGE TUBE
V-11	LINE BLEED VALVE	VR-1	VACUUM JACKET RELIEF PORT, O-RING
V-12	LINE BLEED VALVE	VV-1	EVACUATION VALVE
V-13	LINE BLEED VALVE	R-1	ROAD RELIEF REGULATOR, SET AT 17PSI
V-14	HIGH PRESSURE ISOLATION VALVE	C-1	BOTTOM FILL NIT150 CONNECTION
V-15	LL GAUGE EQUALISATION VALVE	C-2	RECIRCULATION LINE NIT150 CONNECTION
V-16	LOW PRESSURE ISOLATION VALVE	C-3	REAR FILL NIT150 CONNECTION
V-17	86% TRYCOCK VALVE	PBU	PRESSURE BUILD UNIT